

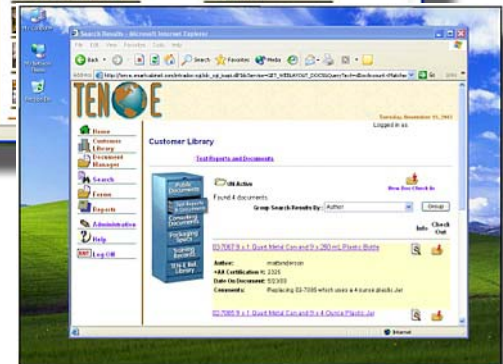
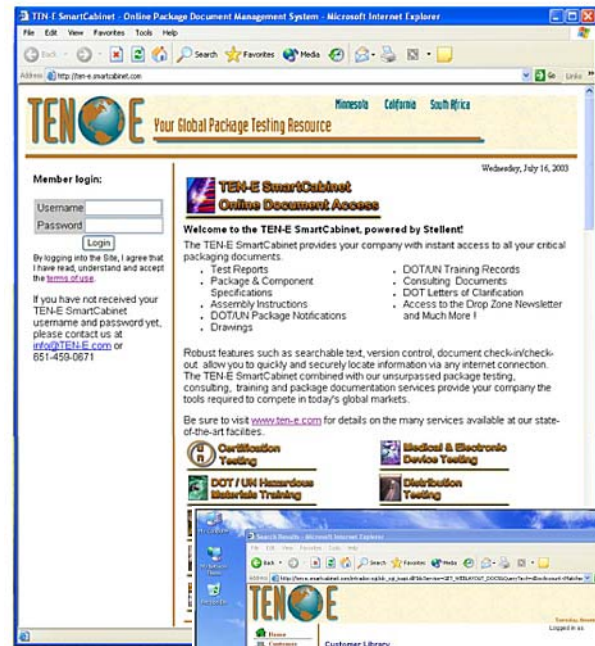
**TEN-E SmartCabinet  
Online Document Access**

The New TEN-E SmartCabinet provides your company with instant access to all your critical packaging documents.

- Save time and space by eliminating paper filing systems
- Provide secure user specified access to multiple facilities around the world
- Quickly locate documents with limited information
- View, print or email documents anywhere, anytime

Robust features such as searchable text and version control allow you to quickly and securely locate information via any Internet connection

- ✓ Test Reports
- ✓ Package & Component Specifications
- ✓ Assembly Instructions
- ✓ DOT/UN Package Notifications
- ✓ Drawings
- ✓ DOT/UN Training Records
- ✓ Consulting Documents
- ✓ DOT Letters of Clarification
- ✓ Access to the Drop Zone Newsletter and Much More!



The new TEN-E SmartCabinet combined with our unsurpassed package testing, consulting, training and package documentation services provide the tools that your company requires to compete in today's global markets.



**Start accessing your documents for as little as \$1,200.00\* per year.** That's secure access to your TEN-E documents for less than the cost of a UN certification.

Contact us at 651-459-0671 or email us at [info@ten-e.com](mailto:info@ten-e.com) to setup your **free two-week trial**.

[www.ten-e.com](http://www.ten-e.com)

\*Cost based on 12 months access for one user/seat (search, view and print rights). Additional user accounts available at a discounted rate of \$720.00 per year. TEN-E documents issued during an active subscription will be posted at no cost. Addition of documents issued prior to an active subscription will be posted at a cost of \$15.00 per document with a minimum charge of \$200.00 for development of directory structure and user access rights. All details are outlined in the annual subscription agreement.